



Spring
Summer
2026

*"You can cut all the flowers but you cannot keep
Spring from coming", Pablo Neruda*

CHAIRMAN'S SPRING MESSAGE

As we move into spring, I hope brighter days and warmer weather are helping to lift everyone's spirits after what has been a difficult winter.

Recently, I asked one of our volunteers what they would most like to read about in this newsletter. The answer was simple: "numbers." So here are a few that reflect the incredible work your support makes possible.

The Rosemary Foundation is now approaching its 30th year and, during that time, we have supported more than 4,000 local families. We look forward to celebrating this important milestone in 2027, so please keep an eye out for future announcements and events. Our commitment to the community remains constant. We have two nurses on call at all times, providing care 24 hours a day, 7 days a week, 365 days a year. To deliver this vital service, we employ 12 nurses and 11 healthcare assistants, all dedicated to ensuring patients and families receive the highest standard of care when they need it most.

Throughout the winter, our clinical team continued to provide a full service across the local community. As the conditions and illnesses we support become increasingly complex, we regularly review and audit our practice to maintain the highest standards of care. Our nurses have undertaken additional training and developed new skills so that we can continue to respond quickly and effectively to patients' changing needs. Thanks to careful financial management, more than 75% of our expenditure goes directly towards clinical care. Your generosity and continued support make this possible, and we are deeply grateful.

Our community has once again shown extraordinary support for our fundraising efforts this year. From events organised by Entertainment Events to marathon runners, sponsored walks, open gardens, and the many local businesses who continue to champion our work — the response has been overwhelming. There are far too many individuals and organisations to mention by name, but every contribution makes a real difference. Thank you.

I would also like to pay tribute to our wonderful volunteers. Many may not realise that the time and support they give saves The Rosemary Foundation the equivalent cost of a full year's nursing salary. Volunteers contribute in so many valuable ways: welcoming visitors on reception, assisting with fundraising events, and visiting families to provide companionship and support, often allowing carers a much-needed opportunity for rest. We have recently introduced induction days for all volunteers, offering information, guidance, and support from both staff and fellow volunteers, helping everyone feel part of the Rosemary Foundation family from the very beginning.

Sadly, as I write this letter, we are saying goodbye to Louise Golledge, our Clinical Manager, who has been with us for nearly ten years. Louise has been a dedicated and valued member of the team, contributing enormously to the smooth running and development of our service, while introducing many improvements that have streamlined clinical care. We thank her sincerely for everything she has done and wish her every success for the future. At the same time, we are delighted to welcome Kat Lacey as our new Clinical Manager. Kat brings a wealth of experience from her many years at The Rowans Hospice, and we look forward to working with her.

We are also pleased to welcome Pete Fisher to our Board of Trustees from May 2026.

Finally, this will be my last Chairman's letter. It has been a privilege to serve The Rosemary Foundation and to witness the compassion, commitment, and generosity that exists within our community. I am delighted to hand over to our new Joint Chairs, Keith Gale and Andrew Holden, who I know will make an excellent team and continue to lead the charity with great care and dedication.

Thank you all for your continued support.

Gill Haworth, Chairman

FINANCIAL REVIEW

Every year I produce a budget, the income side of which is really a plunge into the unknown whilst the expenditure is much more of a certainty. My forecast to June 2025 had shown a marked increase in expenditure together with a predicted sharp fall in income, resulting in a rather gloomy outlook and high deficit at the end of June. I am pleased to say that despite another challenging year. Our year end accounts to June 2025 showed a small surplus.

The year saw an overall increase in income, against my prediction, of just over £262,000, with 13% of this coming from supporters, plus a significant increase in successful Trust and Foundation applications. In addition, we saw a six-fold increase in legacies received as opposed to that expected. Legacies can be extremely unpredictable but when we do receive them, they have a huge impact on our funding and ability to continue our service in the community.

With expenditure creeping upwards each year we are always looking for diverse income streams to support us. The main constant cost is salaries, representing around 75% of our annual costs. Through careful budgeting and monitoring the focus continues to be reducing any unnecessary costs to sustain our charitable service. What is notable is that despite not always knowing where the income will come from, we are continually amazed by the generosity of our community. We also work towards targeted fundraising within the community, with clubs and corporate enterprise proving very effective.

From July last year, the start of our new financial year, and onwards into the autumn we saw steady but lower than expected income, placing quite a burden on the Foundation. Things started to pick up from November onwards where we saw receipts from successful Charitable Trusts and legacy bequests coming in which boosted the figures. We hope for further legacy and Trust funds in the year to raise income and we have lots of planned events coming up. It remains to be said that 99% of our income comes from voluntary donations so the challenge continues to source new income streams.

Our volunteers play a significant role in our organisation and continue to support the Foundation, month in, month out, in so many ways. This truly saves thousands of pounds that we would otherwise have to pay in wages and we remain enormously indebted to them for their contribution. Whether it be finance, reception duties, administration, fundraising events and volunteer visiting of patients, we register our sincere gratitude to them.

Thank you to all our supporters for your continued support. Together we make a real difference to our community.

Niki Hughes-Stanton
Finance Manager

NEWS FROM THE CLINICAL TEAM

The Clinical Team is looking forward to lighter evenings as we enter Springtime, it certainly helps us as we navigate the many potholes as we journey towards patients' homes.

We continue to be extremely busy with high numbers of referrals from our community and palliative care partners, as well as responding to SOS calls throughout the night.

We have also been able to respond to patients who have been in hospital and have decided they would prefer to die in their own home. The feedback we receive from families is "it made such a difference, that their loved ones could be in the comfort and familiar surroundings of their own home in their last days of life".

BEREAVEMENT SUPPORT

We run a Bereavement Support Group on the 2nd Tuesday of each month at our offices in Petersfield. Supported by one of our experienced counsellors and some of our volunteers, it is a welcoming group and an opportunity to share your personal experience of grief with others.

VOLUNTEERS

In February, we held 2 training days for our amazing volunteer colleagues, led by Pete Cragg, our Volunteer Coordinator and our Senior Nurse Jill Meech. The feedback was extremely positive and we will now run this training on an annual basis.

CHANGES IN OUR TEAM

We are extremely sad to be waving goodbye to our dear colleague and Clinical Manager Louise Golledge who has worked for The Rosemary Foundation for 10 years whose contribution to the team has been outstanding. Louise has been a committed, compassionate and professional nurse who has steered us through changing times and we are ever thankful to Louise for her contribution. She will be greatly missed and we wish her good luck and fortune in her new role.

We also extend a warm welcome to Kat Lacey, our new Clinical Lead. Kat is an experienced and highly competent palliative care clinician who is passionate about supporting the clinical team to provide excellence in care for people at the end of their lives.

Loretta Kinsella
Registered Manager

NEW TEAM MEMBERS

KATHERINE (KAT) LACEY

Prior to joining the Rosemary Foundation as the new Clinical Lead, I spent 11 years providing outstanding palliative care at the Rowans Hospice. I started at the hospice as a student nurse and worked my way up to Ward Sister, gaining knowledge and experience on the Inpatient Unit. My passion for palliative care has always driven me to want to learn more from others while teaching and leading a team. A recent personal experience turned my attention from hospice nursing to providing excellent palliative care in the community. I am passionate about continuing the ethos of the Rosemary Foundation and maintaining the excellent level of service that The Rosemary Foundation provides to the community.



CHARLOTTE WITHEY

Hi, I'm Charlotte Withey, Administrator for The Rosemary Foundation, having joined in December 2025. I have worked in the administration sector for 20+ years but really wanted to transfer my skills into a role that involved helping others and making a difference. So, I was very excited to join the Rosemary Foundation team.

The role is very fast paced and contains many different elements. I support the office with general administration duties as well as oversee the Health and Safety onsite. I also support our volunteers with anything they may need and try to get stuck in where needed.

In my interview, I said that a job to me wasn't about the 9-5, it's about what you do in those hours; knowing what you're doing is something you care about and I'm thankful to have that opportunity.

When I'm not working, I'm married and a Mum to two wonderful children. Life outside of work can be hectic. Out of school activities keep me busy and driving around to all sorts of locations. But I wouldn't have it any other way! I also love cleaning and organising and making our home a welcoming, comfortable place to be and for our friends to feel at home when they visit. When we have more relaxed times, it's filled with walks, a few board games and good food! I love to keep us busy, but then usually complain about how busy I am!

I'm really looking forward to seeing what's ahead at the Rosemary Foundation and attending some of our Fundraising events and hope to meet some of you there.



FUNDRAISING & OPERATIONS MANAGER'S REPORT

I hope this newsletter finds you well and looking forward to the brighter summer months ahead. Our small but mighty Fundraising Team has been incredibly busy over the past few months. Since July 2025, Shirley Leader, our Community Fundraising Coordinator has supported over 100 community events. Through social media, local connections, and the wonderful relationships she has built with supporters, vital funds continue to be raised for The Rosemary Foundation — and we are immensely grateful to every one of you.

Since 1st July 2025, our Community Fundraising activities have raised an incredible £74,000! If you know anyone who might like to take on a challenge or organise a fundraising event for us, we would love to hear from them. Please encourage them to get in touch at info@rfpetersfield.org.

You can find a full list of our upcoming events on the back page of this newsletter or online at: The Rosemary Foundation Events Calendar. Special thanks go to Ali Dolphin for his continued work and support with our website.

We are delighted to welcome Charlotte Withey to our Administration Team. Charlotte will be supporting some fundraising events throughout the year and we look forward to introducing her to you over the coming months.

I continue to submit applications to Trusts and Foundations in support of our work. While this remains an extremely competitive source of income for charities, we have been fortunate to secure several successful grants this year. I am hopeful that, by the end of our financial year in June 2026, this area will have made a strong contribution to supporting our services.

We are incredibly grateful for the continued support of our local parish councils. Their generous grants make a direct and meaningful difference, helping us to fund and sustain our counselling services for those who need them most. We would like to extend our sincere thanks to the parishes of Bentworth, Horndean, East Tisted, Langrish, Hawkley and Bramshott & Liphook for their recent support.

Our Christmas Market in November 2025 was a phenomenal success, raising more than £9,000! A huge thank you goes to Churcher's College for once again providing such a wonderful venue and for their continued support of The Rosemary Foundation. The date for our 2026 Market is Sunday 15th November, again at Churcher's College. We will be selling raffle tickets and Christmas cards in Petersfield market on Saturday 7th November – please do pop by and say hello.

The Friends of The Rosemary Foundation Scheme continues to grow and remains an essential source of ongoing support for our work. If you would like to become a Friend of The Rosemary Foundation, please email info@rfpetersfield.org for more information.

We are also pleased to be expanding our network of corporate partners, whose support helps us both financially and practically. Some organisations assist through sponsorship and fundraising, while others generously provide services or help maintain our facilities. We are particularly grateful to SMI and Aspire Pharma, Rowlands Castle and Petersfield Golf Clubs (from April 2026), IPMF Facilities in Bordon, and Entertainment Events, who have pledged to raise £30,000 for us this year. Entertainment Events delivers high-quality entertainment and experiences at affordable prices, with profits supporting local charitable causes. If you know of a company that may be interested in nominating The Rosemary Foundation as its Charity of the Year, I would be delighted to meet them and explain our work within the community.

Finally, if you currently receive this newsletter by post, please consider switching to email delivery if possible. With postage costs continuing to rise, we may not be able to sustain postal distribution in the future. Each newsletter currently costs approximately £2.40 to print and post, and we send around 250 copies which soon adds up! If you are happy to receive future newsletters electronically, please email me at wendy@rfpetersfield.org.

Thank you, as always, for reading this newsletter and for supporting The Rosemary Foundation. Please do share it with friends and family, and if you have ideas, stories, or content you would like included in our Spring/Summer 2027 edition, we would love to hear from you.

A short, double-sided autumn update will be available, with copies ready to collect from our office from 1st November 2026.

Wendy Smith
Fundraising & Operations Manager

Just Some Of Our Lovely Fundraisers!



ENTERTAINMENT EVENTS



Beacon of Peace
Living Humanity

COMMUNITY FUNDRAISING

We have had over 100 events that we know about which have been put on in the community for The Rosemary Foundation this past year! How wonderful! You continue to amaze us with your support. Nearly every day we hear of the difference that our work makes and this is so lovely to hear, yet sadly, we can only carry out our work with support from all of you. Thank you so much!

See below for a flavour of the different events which have taken place and don't forget to enter the Lucy Foley named book character competition!

Shirley Leader, Community Fundraising Coordinator

SUPPORT FROM OUR LOCAL LODGES

We were lucky enough to be a beneficiary again from local lodges. Headley Masonic Centre, Woolmer Lodge and Portsmouth & District Lodge have all supported us and the latter also raised money via a Hambledon Wine Tasting event organised by the late Mr Chad Chadha (who we will miss dearly as a friend & supporter of our work) and Mr John Jackson.



Thank you to all of the Members!

COMMUNITY TEAS

Teas in the community are lovely events which bring people together and raise vital funds for charities such as ours. The Winter Teas event was organised by Diana & Heidi from St. James Church in Waterlooville and raised a wonderful £164. St. James Church in Clanfield, raised £164 for us. The Liss Foresters Friendly Society put on a cream tea, where our nurses popped by and received £250. The lovely community at Oakwood Court, Bordon held an afternoon tea where there was plenty of cake and good neighbourly chat, raising £280! ST. JOHN'S PCC, West Meon raised £436 for our charity. Thank you All so much!

LOCAL RETAIL BUSINESSES

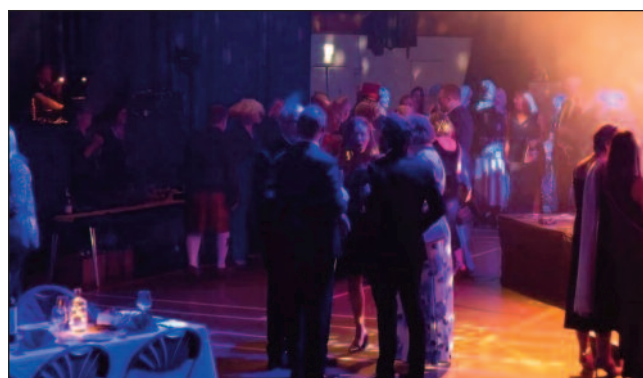
We are very blessed to have local businesses wishing to raise funds for our charity especially in such challenging times. Some of the businesses are mentioned here - our apologies for not naming them all: Hectors elf trail, Forget Me Not sales proceeds, The Daisy Chainers/Sew Creative

Christmas Market stall, Madeleine's Kitchen quiz Froxfield Stores & Post Office donations, The Pub With No Name various events, The Halloween Walk by The Petersfield Bookshop and Chapel St Vintage, Annie Jones Wednesday night charity meals, The Nest Hotel & Restaurant bingo nights, Waitrose tokens scheme, Howdens trade day, Coombes Forestry donation and many more!



ENTERTAINMENT EVENTS

Our wonderful supporters, Entertainment Events hold many events in the year to support us. A Burns Night was held where they put on an extra lunch time session and in total raised £2550. The inaugural Spring Ball at Churcher's College raised £5500 and we eagerly wait for the rest of the years events such as the Spread-Eagle Music Festival, the Half Moon Summer Festival, Abba Night, Cabaret Night and Hoedown. We thank Robert, Chris, Sue and their team for supporting us with tremendous energy and generosity.



ANNUAL EVENTS

We could not survive without our regular fundraisers who each year choose to support us. Amongst them are: Steep Bonfire Committee who raised £1000, Petersfield Round Table Fireworks gave us £537.20, Neil Noble Memorial Golf Day raised £2080, Gemini Consort raised £1462.30 last year, Liss Runners via the Harting Multi-Terrain Race recently gave us £1250, Bramshott Open Gardens/Bramstock gave us £2000, Beacon of Peace Walk donated £500, Watoto Trust hold a Christmas fair and donated £1000.



MELODY CARE 24 HOUR CYCLE RIDE

Supported by the Royal Exchange pub, Lindford, local councillors, mayoress, special guest Brian Wood MC and the lovely community, Melody Care with an office in Alton, chose to raise money for our charity by holding a 24-hour indoor cycle ride and auction! The event was well attended and created a local buzz! We felt humbled to receive £4000 from them! Their next event for us takes place on the 5th & 6th June. We hope to see you there!



MARCH FOR MEN WITH KEV



What a wonderful event in Petersfield in aid of Prostate Cancer. March for Men with Kev organised by Claire McShane Birkett and her team turned the town blue with walks of various lengths around the town. Our charity had a games stall and we were kindly donated £3381.97 from this event. We would like to thank everyone who supported this event. Do sign up for their next event on the 13th September!

PAUL HAWES MARATHON DES SABLES

Paul Hawes undertook the impossible feat of participating in The Multistage Ultra Marathon Des Sable in the Sahara Desert, Morocco. It involved participants covering 270km over 6 days carrying their own food and gear for a week. Part of Paul's training involved acclimatising in a heat chamber at the University of Chichester, completing The Pilgrims Way Challenge 34 miles - on Saturday along the North Downs from Farnham to Reigate, sleeping in a Sports hall in a sleeping bag, then repeating the 34 miles back a total of 68 miles through sticky mud and much elevation. Well done Paul for achieving this and raising over £3100 for us!



THE CARTER FAMILY



As a family we are thankful to the Rosemary Foundation for the devoted care they gave to our son and fiancé to Lucy, Henry Carter. From the initial visit, the exceptional support and kind nature of the whole team was brought into our home and has remained a great comfort to us all ever since. We are grateful to the friendly staff including the dedicated nurses that provided helpful assistance during difficult times and feel fortunate to continue experiencing that same kindness today. It is a privilege of ours to be able to support the Rosemary Foundation in Henry's honour and show gratitude towards the outstanding work they are committed to bringing to the community.

BRAMSHOTT PLACE

The residents of Bramshott Place Village, near Liphook, have been fundraising for The Rosemary Foundation, and other charities, for a number of years now. The Foundation has touched the lives of many people in the Village and their families. Villagers are keen to support this local charity as their services directly impact the surrounding community. We also raise funds for National charities but the majority goes to The Rosemary Foundation. We have raised funds via coffee mornings, social events, such as a Tombola at our annual Summer Fete and more recently a video horse racing evening! We are grateful for all that they do in the community

THE WOMEN'S INSTITUTE

We have had a fabulous year with many local WI groups. They have all been so lovely and amongst them all, we have received approximately £5000 from raffles, Christmas fairs, coffee mornings, card sales, cake sales. Many thanks to Rowlands Castle, Petersfield, Bramdean and Hinton Ampner, Denmead WI Belles & Sheet WIs!



Local Business Growth Network Supports The Rosemary Foundation



BGN – Business Growth Network, Petersfield are a networking group that meet every Wednesday morning

at 7 am at The Half Moon, Sheet to develop and promote local business. We have been their nominated charity for many years and they support us in many ways, from sponsoring this newsletter, attending events, running quiz nights, donating raffle prizes - their support is never-ending – thank you!

We were presented with a cheque for £250.00 at their most recent quiz night, for which we are incredibly grateful



If you are thinking of raising money for us via an event (e.g. run, walk, cake sale, football game or golf event etc), please get in touch and we can discuss any ideas that you may have. Email info@rfpetersfield.org

VOLUNTEER VISITOR TEAM

The Volunteer Visitor team continues to flourish providing respite to carers and companionship to patients of The Rosemary Foundation.

Since the previous newsletter, we have said goodbye to Sally Bull, one of our Volunteer Visitor coordinators for many years. Sally is now following a path of providing counselling to those who need it and we all wish her well with her new adventure.

Sally is continuing to support the Bereavement Café which is of great benefit to those recently bereaved.

We have welcomed three new Volunteer Visitors to the team since the previous newsletter, Zehra, Niall, and Kim who are all actively involved in providing respite to our patients where requested and in the case of Zehra and Kim, they are also providing Alternative therapies, namely Reiki and Hand and Feet massage.

Experience so far shows that our patients are finding these sessions both relaxing and comforting as part of their palliative care.

Being a Volunteer Visitor can be very challenging but is also extremely rewarding. You really do make a difference to our patients end of life care. If this is something that you would like to be part of and would like to know more about what is involved, please do get in touch with The Rosemary Foundation at the office in Lavant street or by email info@rfpetersfield.org

Pete Cragg
Volunteer Visitor Coordinator

TO DONATE VIA OUR WEBSITE, PLEASE HOLD YOUR PHONE CAMERA OVER THE BELOW QR CODE



Thank you for your donation
You May Also Visit Our Website To Donate

[www.https://rosemary-foundation.org.uk/](https://rosemary-foundation.org.uk/)

THANK YOU TO OUR SPONSORS!

We would like to take this opportunity to thank our sponsors of this edition of The Rosemary Foundation Newsletter. Without their support we would be unable to bring this newsletter to you.

TRIO SYSTEMS



Trio Systems are an authorised Canon Partner. We have been servicing and supplying photocopiers for over 30 years. With highly trained support staff we can supply the latest in office technology tailored to your exact requirements. Trio Systems can provide total support from single units to large corporate solutions for multiple installations. Please do not hesitate to contact us for more information.



Award winning flexible and affordable health insurance. Lorna and Matt Smith are local healthcare partners working with WPA who provide award winning, flexible and affordable health insurance that protects the health and wellbeing of you, your family and businesses of all sizes. For more information contact: matt.smith@wpa-hcp.org.uk or call: 07500 860451



Architectural Designers and Consultants to the Construction Industry
For more information contact: graham@acedesigns-ltd.co.uk
or call: 01730 894988

petaprint

Petaprint are so pleased to be a sponsor for the wonderful Rosemary Foundation.

We've been printing in Petersfield for over 40 years, looking after businesses, societies, sports teams and individuals.

Anyone really!

Tel: 01730 262450 Email: colin@petaprint.co.uk

www.petaprint.co.uk

If you would like to sponsor a future newsletter, please contact: wendy@rfpetersfield.org

THANK YOU TO OUR SPONSORS!



We work with businesses supplying personalised clothing, helping you to promote your brand. We can add your company logo, embroidered or vinyl, on T-Shirts, Polo's, Hoodies, Jackets, and so much more.

To find out more email: sales@yapo.co.uk or call us on: 01420 478 877.



Your local independent Chartered Accountant, providing tax and accountancy support to family run businesses, limited companies, sole traders and partnerships helping with their accounts and tax affairs. Sarah also works with landlords and individuals needing support with self-assessment for income tax and capital gains tax. For more information contact Sarah: sarah@sarahredfern.co.uk or call: 07703 067 002




Secure Self Storage for Household and Business.


Providing self-storage facilities for use when you need storage for: Moving House, Redecorating, Short of space at home, work, in the garage or loft

For more information contact: selborne@barn-store.co.uk or call: Tel: 01420 511777

**If you would like to sponsor a future newsletter
please contact: wendy@rfpetersfield.org**


WOULD YOU LIKE TO BE A NAMED CHARACTER IN A NEW MURDER MYSTERY BOOK?



The Rosemary Foundation has teamed up with No. 1 NY Times Best Seller & Local Author Lucy Foley and One Tree Books for an exciting prize to be named as a secondary character in Lucy's new book!

ENTER YOUR NAME* BETWEEN 6TH MAY & 9TH JUNE INCLUSIVE, BY BUYING A TICKET AT £5 EACH VIA:

- ONLINE - SCAN QR CODE OR USE THE LINK (booking fee applies): <https://www.ticketsource.com/onetreebooks/t-lddynno>
- IN PERSON - ONE TREE BOOKS, 7 Lavant Street, Petersfield, GU32 3EL
- TEL - 01730 261199



ATTEND AN EVENING WITH LUCY FOLEY ON TUESDAY 9TH JUNE FROM 6.30PM AT ONE TREE BOOKS WHERE THE WINNER WILL BE DRAWN PLUS A Q&A WITH LUCY. FREE ENTRY.

CONTACT THE ROSEMARY FOUNDATION FOR ANY QUESTIONS - INFO@RPETERSFIELD.ORG
*We reserve the right to check names entered

All Proceeds Go To The Rosemary Foundation

The Rosemary Foundation, via sncs Charity registered in England, No 1064373, and a Company Limited by Guarantee, Registered No. 03362046.



You're Invited To

Open Garden

In aid of The Rosemary Foundation

Down Place, South Harting, Petersfield, Hampshire, GU31 5PN
Sunday 14th June 2026
12pm-5pm
£5 Entry on the day (cash/card)
Children under 12 Free
Tea, Coffee, Cakes, Charity Stall & Plant Sale



Seven Acres Picturesque Setting

Directions: B2141 to Chichester, turn left down unmarked lane below top of hill. Coming from Chichester on B2141 take turning right just after the South Downs Way crossing the road.

TIME TO REGISTER!

MARCH FOR MEN WITH KEV

PETERSFIELD, SUNDAY 13TH SEPTEMBER 2026

TO JOIN THE WALK AND REGISTER:
See our website for details:
www.marchformenwithkev.co.uk
(£5 registration fee per adult)
Raising Awareness & Funds In Honour of Kevan Birkett









THE ROSEMARY FOUNDATION CHRISTMAS MARKET

SUNDAY 15TH NOVEMBER
10.00AM - 1.30PM
Churcher's College
Ramshill, Petersfield, GU31 4AS

Raffle, A Variety of Stalls, Handmade Gifts, Fashion, Homeware, Handbags, Pottery, Christmas Cards, Candles & More!

Games
Live Music
Cafe
Cake
Tombola
Father Christmas & His Elves



DATES FOR YOUR DIARY

9TH JUNE	LUCY FOLEY BOOK CHARACTER Q&A EVENING, ONE TREE BOOKS, 6.30pm
14TH JUNE	OPEN GARDEN, HARTING, with refreshments, 12pm-5pm
27TH JUNE	ACHOURED TASTE SUMMER CONCERT, WATERLOOVILLE, 7.30pm-10.30pm
5TH JULY	PETERSFIELD COMMUNITY FAIR, CHURCHER'S COLLEGE, 10am-2pm
14TH - 18TH JULY	HALF MOON MUSIC FESTIVAL, Entertainment Events
25TH – 26TH JULY	BOURNE QUILTERS SHOW, EMSWORTH, 10am-3pm
2ND AUGUST	MULTI-TERRAIN RACE, SOUTH HARTING CRICKET CLUB, 10 miles race
29TH AUGUST	POP-UP PLOUGHMAN'S LUNCH, LISS PAVILION, 12pm to 2pm
13TH SEPTEMBER	MARCH FOR MEN WITH KEV, MARKET SQUARE, PETERSFIELD, 10am
25TH SEPTEMBER	SOS THE ABBA PARTY BAND, FESTIVAL HALL, Entertainment Events, 7pm
26TH SEPTEMBER	CABARET SHOW, FESTIVAL HALL, Entertainment Events 1.45pm to 4.30pm and a HOEDOWN from 7pm
1ST OCTOBER	CHRISTMAS CARDS ON SALE, THE ROSEMARY FOUNDATION OFFICE, PETERSFIELD
7TH NOVEMBER	THE ROSEMARY FOUNDATION RAFFLE AND CHRISTMAS CARD SALE, MARKET SQUARE, PETERSFIELD, 9am to 2pm
15TH NOVEMBER	THE ROSEMARY FOUNDATION CHRISTMAS MARKET, CHURCHER'S COLLEGE, with many wonderful stalls, entertainment, refreshments and Father Christmas!

For Up To Date Information on our Events, visit our Website:

<https://rosemary-foundation.org.uk/events-calendar/>



The Rosemary Foundation. 35 Lavant Street, Petersfield, Hants, GU32 3EL
Telephone: 01730 266329 Office email: info@rfpetersfield.org
Registered Charity No 1064723. Company Registered No: 3390218

