



Spring
Summer
2025

*Like seeds scattered wide on a fertile field,
Simple acts of kindness, compassion revealed,
Each smile a bud, each word a warm sun,
In the garden of hearts, we blossom as one.*

CHAIRMAN'S SPRING MESSAGE

Hello Everyone,

Spring is the time when the clocks jump forward, evenings are lighter, and we are looking forward to continuing to provide superlative care and support to families in need of assistance when navigating the difficult pathway of a life limiting illness.

AI has been constantly in the news recently and although we have moved forward, you will I hope be pleased to know AI is not on our agenda. We have advanced our technology and installed a new computer system which communicates with other health care providers and is easily accessed by our nurses to obtain up to date accurate patient information when on call.

You will also have heard much discussion around assisted dying which has highlighted the poor funding for hospices and the effect on fund raising within the present economic landscape. We are pleased to say we are able to maintain our staff numbers thanks to your continued support.

The good news is we have many local fundraising events for you to enjoy and last month we joined the launch of Hospice UK's legacy appeal. This appeal is to encourage people to leave a gift in their will to their local hospice/hospice at home. This kind gift is so important for the long-term financial health of the foundation. We were also proud winners of Contribution to the Community in the Petersfield Awards – thank you to everyone who voted for us.

Sadly, we have said goodbye to a number of our nursing staff who have been with us for many years. Sandy, a caring and accomplished nurse who also provided important pastoral care to staff and patients. Sabine, our longest serving member of staff, who was one of the original nurses working in Bordean House. Penny a staunch member of the team since 2008 taking on any task asked of her, a wonderful caring nurse. And last but by no means least Caroline, our registered manager since April 2017, having joined the team in September 2011 will be standing down to take up a clinical role with less hours within the team. Caroline has worked tirelessly to achieve our CQC outstanding status, took the team through Covid and has been a sensitive support to staff.

With Best wishes from all at The Rosemary Foundation

Gill Haworth

Pink Cherry Blossom Front Cover, kindly donated by www.mariayadegar.art.

Follow Maria on Instagram @maria_yadegar_art. Maria says "This painting was from last spring and of my neighbour's beautiful ornamental cherry tree".

FINANCIAL REVIEW

The last financial year has been quite a challenging one for us - our year end accounts (to June 2024) showing a small deficit for the first time.

The income and expenditure budget for the year showed a marked increase in expenditure as we invested in a much-needed digital clinical IT system. In addition to project management and provider costs, we had to purchase essential IT equipment in the form of laptops (27) for the nurses, a capital cost of £33,500. Overall we saw a 7.8% rise in annual expenditure compared to the previous year, with annual expenditure totalling £843,125. Of this figure the wage cost remained our biggest expense at over £680,000 and represented 80% of our total expenditure.

Income was particularly mixed over the year with general donations continuing to show a downward trend, similar to the previous year. We also saw a huge decrease (40%) in Charitable Trust and Foundation donation, being continually turned down on applications made. Priorities for this type of donating have changed with Trusts and Foundations concentrating their funding on mental health, refugees and homelessness. We have really struggled to make a case whereas in the past we have reliably seen income from this channel well above £100,000 annually. Our focus has therefore turned to working harder at targeted fundraising within the community with clubs and corporate enterprises, which has proved effective.

We received very little in the way of legacies (year to June 2024) with the exception of a generous gift in the last month of the year. We were therefore extremely relieved when Hospice UK announced that they were organising a nationwide Legacy Campaign – at a time when hospices are struggling with their finances, and some are even threatened with closure. The Rosemary Foundation have joined this campaign and hope that it will raise awareness about gift giving and show the difference a person can make if they are able to leave a gift in their will to support their **local** hospice at home.

After a slow start to our new financial year things have picked up with increased donations, legacy monies confirmed and success with some Charitable Trust organisations. We remain financially resilient and able to deliver our service to the community free of charge. But with 98% of our income reliant on voluntary donations conditions remain challenging. We will continue to strive to save costs where we can but with increases in staff numbers and the increase in employer NI which came into effect in April, the wage cost will become significantly higher.

We continue to encourage our volunteer workforce – this is a huge saving to the foundation and our thanks goes out to them for their wonderful support. Likewise to all our supporters - together we make a real difference to our community.

Niki Hughes-Stanton
Finance Manager

NEWS FROM THE CLINICAL TEAM

The Clinical team remains very busy. The many constraints placed upon the NHS and other Health Professional teams we work with increases the demand for our service. The team continue to work incredibly hard, remaining passionate about the quality of care and support we deliver. The winter has been very wet and grey, making driving at night more difficult when needing to reach a patient requiring our help urgently.

In September our new electronic care record system was launched, SystmOne. Louise, Maria, and Pete worked tirelessly over many months to make this happen. We are now 8 months post go live and it has transformed the way in which we work. Consent to share information is always obtained, and we are able to see other Health Care Professional teams' notes/comments and plans. This allows for improved communication and continuity of care.

There have been many changes to the team over the last few months and we have sadly said farewell to some of our colleagues.

Sandy Phillips retired after 10 years. Her experience and expertise, plus pastoral care to the team has been of huge value, she is missed by us all.

Sabine Banes-Walker, one of the original Rosemary team, has also retired and moved to Jersey. Some of the team will be visiting her later this year.

Jess Rushton has commenced her Midwifery training at Winchester University. Jess continues to work as a bank HCSW in our clinical team.

Hayley Morton is now spending more time with her grandchildren. We miss her sunny nature and smile.

Marilyn Henly retired at the end of 2024, she is enjoying her travelling and more time with grandchildren.

Nicola Ward has recently left the team; we wish her well and will miss her zooming into the car park in her very bright sporty car!

Penny Powell retired at the end of March. Having been with the team since 2008, she brought a wealth of experience/expertise and kindness to the team, most recently working as part of triage and managing the bereavement cafes. She has also been very active in supporting many fundraising events. We wish her a very happy and restful retirement.

We have also welcomed new team members, who have settled in well. You can read Carol's blog to find out more and why they chose to work for The Rosemary Foundation. Amey Milsom has returned to the team after a break and is enjoying being back. We have recently recruited 3 more staff who will be joining the team in the coming months.

Caroline Hinder & Louise Golledge

From Caroline

After 8 years as the Registered Manager, I have decided to stand down, a decision not taken lightly. It is time to pass the baton on.

It has been an interesting time, challenging, fun, emotional, and rewarding. Taking the team and service forward with many new members, working alongside Claire Dunn and trustee Chair Chris Wilton for 7 of the 8 years.

We were delighted to be rated overall outstanding when the Care Quality Commission inspected our service in November 2019 and are so very proud of our excellent team. COVID brought challenging and uncertain times, however with the wonderful nurses working so hard, we maintained our service to the community. The most important values within the team are loyalty, empathy, transparency and a good sense of humour. The ongoing support from the administration team, volunteers and trustees has been huge, where would I have been without them!

When the new manager is appointed, I will remain in the team, triaging and working with the clinical team and attending fundraising events.

Thank you all for your kindness and support.

From Louise

I joined The Rosemary Foundation in July 2016, having worked in various roles within the NHS. Since then, I have been fortunate to have had the opportunity to study and achieve a Degree in Supportive and Palliative Care from The Royal Marsden and more recently gained a Diploma in Leadership and Management. This study and experience led to a promotion as Clinical Manager in May 2024 when Claire Dunn stepped down. I am passionate about continuing the values and ethos of The Rosemary Foundation and ensuring quality care and services to our patients and their families. We have an amazing team of Registered Nurses and Health Care Support Workers, all committed to ensuring the highest level of care and support at the end of life. I look forward to working with the new Registered Manager, when they are in post, to maintain the excellent level of service the Rosemary Foundation provides to the community.

NURSES BLOG

CAROL HINDS

I have been a nurse for 20 years and started my career at Papworth Hospital in Cambridge on a specialist respiratory ward. I have moved around gaining different experiences on elderly and acute medical wards in Portsmouth. I have also been a Community Matron in Portsmouth and I joined The Rosemary Foundation last year. I have an interest in Palliative Care and wanted to work nearer to my home in Liss. My husband is very supportive and I live with my lovely cat called Monty. I am a keen knitter, baker and I love reading.



FUNDRAISING MANAGERS REPORT

Welcome to spring. I hope you are all well and enjoying this warm, spring weather.

I continue to work on generating income from Charitable Trusts and Foundations, local companies and community fundraising. Trusts & Foundation funding continues to be competitive, but we never give up.

As you will see, Community Fundraising is incredibly busy and has raised over £78,000 since 1st July 2024. We already have lots in the diary for the coming year and are so grateful to everyone running Marathons, organising Bake-Off's, opening gardens, golfing events, WI fundraisers - the list is endless. Entertainment Events continue to support us and are currently organising the Petersfield Festival:

<https://www.entertainment-events.co.uk/petersfield-festival-season>

A list of all events is shown on the back page of this newsletter or visit our website:

<https://rosemary-foundation.org.uk/charity-events-in-hampshire/>

We had a wonderful time at The Rosemary Foundation Christmas Market. After months of hard work, the day of the market came! Held for the first time at Churcher's College, the footfall was beyond our expectations, so much so that we will be moving to a bigger hall this year (See Dates for your Diary for further information). Opened by Mayor Cllr Lesley Farrow, we had a large variety of stalls including vinyl records, cushions, handmade gifts, handbags, bath products, plants, cakes, raffle, tombola, entertainment, face painting and more! We raised our best ever figure of over £7000. Thank you to everyone who supported our event, and we look forward to seeing you again at our 2025 event.

Our Friends of the Rosemary Foundation Scheme is important to us and currently brings in £2,300 per month (we are trying to increase this). This funding gives us financial security each month enabling us to plan ahead for the future, so thank you to everyone who is a Friend of The Rosemary Foundation. If you would like to find out more, please email the office – info@rfpetersfield.org

Local companies and organisations continue to help us by choosing us as their Charity of the Year. Liphook Golf Club have continued for a further year, as well as Aspire Pharma in Petersfield, SMI Petersfield, Petersfield RC and IPMF in Bordon have come back to us this year. Thank you.

If anyone is connected to any companies that might like to nominate us as their Charity of the Year, please do let me know. I would be happy to go along, meet the staff and give a short talk on the work we do.

If you are receiving this newsletter by post, please consider having it emailed to you – with the cost of postage being so high, we do not know that we can continue to post it out. If you have an email address, please let me know on: wendy@rfpetersfield.org. We are currently posting approx. 250 newsletters at a cost of £2.40 each – ouch!

Thank you for taking the time to read this and if you have anything you wish to see in the 2026 newsletter, please let us know.

Wendy Smith

**TO DONATE VIA OUR WEBSITE,
PLEASE HOLD YOUR PHONE CAMERA
OVER THE BELOW QR CODE**



COMMUNITY FUNDRAISING

What a tremendous year this has been! In my role as the new Community Fundraising Coordinator, I am humbled by the support that is given to The Rosemary Foundation. We rely totally on donations and our team needs to raise a huge amount of money each month! Thank you for your efforts and I look forward to supporting you in future fundraising events!

Shirley Leader

MAYOR'S CHARITY

We are fortunate to have been chosen as one of the mayor's charities and there have been many events run by Councillor Lesley Farrow in aid of us, such as the Picnic Quiz, and the recent Afternoon Tea and Indian Curry Banquet.



Also, another Quiz Night is being arranged. We are so grateful for the mayor's support!

HENRY CARTER INVITATIONAL



We are delighted with Alex Marine, Lucy O'Farrell and the Henry Carter Fundraising Team in raising £27,472.96 for our charity. An extraordinary golfing day was held at Clandon Regis Golf Club whereby a closed bid auction was held. This helped increase the donations made on the day. Thank you to everyone involved with this event!

ACHOIRED TASTE

The lovely chorists from Achoired Taste sang to a packed-out audience at their Sing Christmas Event at St. Wilfrid's Church in Cowplain. Their raffle & ticket sales were kindly in aid of The Rosemary Foundation. Achoired Taste have been great supporters of our charity and each year they have also sang at our Lights of Remembrance evening.

MASONIC LODGES

Our charity partners from the Masonic Lodges in the Borden and Portsmouth areas, namely Woolmer, Portsmouth & District and Headley have been hard at work to raise valuable funds for us.



They support a whole host of charities, so we are grateful to be a beneficiary and have held various events for us. Thank you!

LIPHOOK GOLF CLUB

Last year we were charity of the year for Liphook Golf Club. The club organised many events including a bridge day, raffle, charity day and more. They raised an incredible £11825.22 for us! We would like to thank all of their lovely members and especially their captains Catherine Anderson & David Locking.



CONOR BLACKMAN IRON MAN

The Ironman event is 140.6 miles in total; comprising a 2.4-mile swim in the sea, 112 miles on the bike, finishing with a marathon 26.2 miles. Conor Blackman successfully took on the challenge for Harry Kennington, the son of his friends, who lost his brave battle with cancer over a year ago. Harry was in his early twenties. We thank Conor for raising an incredible £6806.25 for our charity.



THE GREAT SOUTH RUN

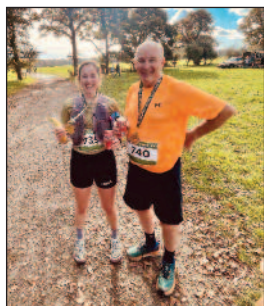
Gemma Hill, Mark Probyn and Kim Tio-Kalinowski all took on the challenge of running this popular Portsmouth based run.

Kim ran the 5KM route. Unfortunately, on the day of the run, the event was cancelled due to inclement weather, so undeterred the runners took it upon themselves to do alternative runs. Gemma ran for our charity as her mum is a member of our nursing team and raised £750.

Mark ran in aid of his friend Henry Carter and raised an incredible £1882.50, and Kim ran for her dear friend Jacqueline and raised £817.50 for us.

So collectively, they raised approximately £3.5K.

Thank you all so much!



HALLOWEEN WALK

£1245.48 was raised by Chapel Street Vintage Antiques and The Petersfield Bookshop! How did they do this, I hear you say? They held a Halloween Walk with a £1 entry free. There was a scary route and a non-scary route. Footfall surpassed the previous inaugural year, so word spread and they made an incredible amount for our charity. Thank you all for supporting this event and we hope that you didn't get too scared!



THE NEST HOTEL & RESTAURANT

Based in scenic Buriton, The Nest have supported our charity for some time now. They hold pub quizzes and bingo in our name and the locals thoroughly enjoy them. Their lovely food and drink also helps! Did you know that they were recently on TV? Each time they do a fundraiser for us they raise approximately £500.

Thank you to Emily, Shane, Amanda & Team!



Forest Fundraisers

For over 12 years, Gill and Bob Elmer have worked tirelessly raising funds through car boot sales, sales of books and bric-a-brac and organising their famous dinner dances. To date Gill and Bob have raised over £35,000 for The Rosemary Foundation. Thank you.



Set up your fundraising page and start raising money for The Rosemary Foundation Limited via <https://www.justgiving.com>

BURNS NIGHT

We had a wonderful time at the Burns Night Celebration, held at The Half Moon, Sheet. Organised by Entertainment Events (long-time supporters of our charity) this event has been so successful, that tickets are already being sold for next year! The event involved two evenings of a Scottish 2-course supper, toasting of the Haggis, a piper, a ceilidh caller and dancing! A mighty £1700 was raised for us!

WAITROSE

Community matters to Waitrose and we were so pleased to be given £1000 to spend on our Volunteers Lunch and annual Nurses Christmas Meal. We rely almost entirely on donations so every penny given to us, goes a long way. Thank you Waitrose-Petersfield!



CHAMPNEYS

Champneys Spa undertook a challenging Spinning Challenge for The Rosemary Foundation last year. As if a normal spin class was not long enough, each month the class, led by instructor Evie, added 5 minutes to the class, which resulted in a 2 hour and 25-minute class at the end of the year in December! The class was supported by sponsors and were cheered on by Champneys staff and The Rosemary Foundation. An amazing £2291.35 was raised! Thank you so much to everyone who was involved and who sponsored the team.



Letters From Our Fundraisers

A 200 MILE CHALLENGE, BY PETER BARWICK

"In memory of 57 years of marriage to my wife, Rose-



mary, one of our passions was walking which took us to many countries around the world and the UK. At the age of 81 I decided to walk the South Downs Way in both directions, a distance of 200 miles. This I completed in January 2025, to raise money for the Rosemary Foundation. They enabled us to keep my wife at home until she passed away. For the support they provided, as a family, we will always be so grateful. Any money we raise means they can support other families in their hour of need".

<https://www.justgiving.com/page/peter-barwick-1735729316842>

FARNBOROUGH HALF MARATHON, BY SARAH KELLY

"I wanted to raise money for The Rosemary Foundation, who looked after my dad in his final days. They were so kind, caring and respectful to my dad. I can't thank them enough. They made the hardest and most painful part of losing someone a little better. They really are angels.

Me and my boot camp girls signed up for the Farnborough Half Marathon, 13.1 miles and we smashed it, so I would like to thank all of the girls for their support from start to finish and all of my friends and family who donated money.

I will forever be thankful for the care you gave my dad at the end of his life. It wasn't just my dad you helped; it was me as well!"



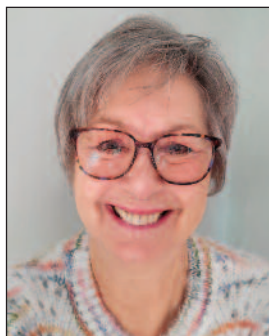
Just Some Of Our Lovely Fundraisers!



VOLUNTEERS

We are extremely fortunate to have some wonderful Volunteers working for us at The Rosemary Foundation. Our newest recruits Val and Janette, join Deborah, Bridget, Katy and Noreen who between them make up our reception team. They all do a fantastic job ensuring that our reception desk is manned on weekdays. This in turn helps the Clinical and Admin teams immensely, by being a compassionate empathetic first port of call for the community.

We really do appreciate all of our Volunteers and Volunteer Visitors who each play such a vital role supporting us in so many ways.



Val Protts joined our reception team in January this year. Val was Personal Assistant to HM Inspector of Constabulary for 15 years.



Janette Jays joined our reception team in February this year. Janette worked at The Swan Surgery in Petersfield for 27 years

VOLUNTEER VISITORS

Our Volunteer Visitor team continues to provide non-medical support to clients of The Rosemary Foundation in their own homes. The team can provide help by either providing respite support for carers of our clients or indeed companionship to our clients through difficult times. We currently have a team of 10-12 active Volunteer Visitors who are prepared to give up their time regularly to help those who need support.

During 2024, our team provided over 200 visits (nearly 400 hours) to clients in their homes which we know is greatly appreciated.

We are always on the lookout for additional volunteers, so if you feel that this is something you could help with, please contact us: info@rfpetersfield.org



THANK YOU TO OUR SPONSORS!

We would like to take this opportunity to thank our sponsors of this edition of The Rosemary Foundation Newsletter. Without their support we would be unable to bring this newsletter to you.



Trio Systems are an authorised Canon Partner. We have been servicing and supplying photocopiers for over 30 years. With highly trained support staff we can supply the latest in office technology tailored to your exact requirements. Trio Systems can provide total support from single units to large corporate solutions for multiple installations. Please do not hesitate to contact us for more information.

Email: enquiries@triosystems.co.uk



Architectural Designers and Consultants to the Construction Industry

For more information contact: graham@acedesigns-ltd.co.uk or call: 01730 894988



Award winning flexible and affordable health insurance. Lorna and Matt Smith are local healthcare partners working with WPA who provide award winning, flexible and affordable health insurance that protects the health and wellbeing of you, your family and businesses of all sizes. For more information contact: matt.smith@wpa-hcp.org.uk or call: 07500 860451



Petaprint are so pleased to be a sponsor for the wonderful Rosemary Foundation.

We've been printing in Petersfield for over 40 years, looking after businesses, societies, sports teams and individuals.

Anyone really!

Tel: 01730 262450 Email: colin@petaprint.co.uk

www.petaprint.co.uk

THANK YOU TO OUR SPONSORS!



We work with businesses supplying personalised clothing, helping you to promote your brand. We can add your company logo, embroidered or vinyl, on T-Shirts, Polo's, Hoodies, Jackets, and so much more.

To find out more email: sales@yapo.co.uk or call us on: 01420 478 877.



Sarah Redfern Ltd
Your Local Accountant

Your local independent Chartered Accountant, providing tax and accountancy support to family run businesses, limited companies, sole traders and partnerships helping with their accounts and tax affairs. Sarah also works with landlords and individuals needing support with self-assessment for income tax and capital gains tax. For more information contact Sarah: sarah@sarahredfern.co.uk or call: 07703 067 002



Secure Self Storage for Household and Business.

Providing self-storage facilities for use when you need storage for: Moving House, Redecorating, Short of space at home, work, in the garage or loft

For more information contact: selborne@barn-store.co.uk or call: Tel: 01420 511777

**If you would like to sponsor a future newsletter
please contact: wendy@rfpetersfield.org**

NOT TO BE MISSED!

THE HAWKLEY INN
BEER FESTIVAL
WITH MUSIC

16-18 MAY 2025

ENTRANCE **£6** PER SESSION

SESSION 1 - FRIDAY 16 MAY - 5:30PM - 10:30PM
SESSION 2 - SATURDAY 17 MAY - 12NOON - 5PM
SESSION 3 - SATURDAY 17 MAY - 5:30PM - 10:30PM
SESSION 4 - SUNDAY 18 MAY - 12NOON - 4PM

PARALLEL LINES | RESCUE MISSION | CHICAGO 9 | REMEDY | BOOST BUTTON
DREAMWEAVER | BLACK CHERRY JAM | AND MORE...

BEER - FOOD - LIVE MUSIC
IN AID OF THE ROSEMARY FOUNDATION

TICKETS: [ENTERTAINMENT-EVENTS.CO.UK](https://entertainment-events.co.uk)

ENTERTAINMENT
EVENTS

TICKETS



NURSES TEA PARTY SAT 21ST JUNE 2025

Afternoon Tea with The Rosemary Foundation

Join the nurses for this wonderful event.

Tickets can be purchased in advance and include entry to raffle.

To reserve your place, call the office on 01730 266329

Or email info@rpfetersfield.org

Fundraising for The Rosemary Foundation



Sat 21st June

2:00 pm

Liss Pavilion
Liss

Tea and Cakes

Raffle

THE ROSEMARY FOUNDATION

35 Lavant Street
Petersfield GU32 3EL
01730 266329

www.rosemary-foundation.org

THE HALF MOON
SUMMER MUSIC FESTIVAL
15-19 JULY 2025 | THE HALF MOON, PETERSFIELD

ENTERTAINMENT
EVENTS

TICKETS

IN AID OF THE ROSEMARY FOUNDATION
[ENTERTAINMENT-EVENTS.CO.UK/FESTIVAL](https://entertainment-events.co.uk/festival)
[HALFMOONSHEET.CO.UK/FESTIVAL](https://halfmoonsheet.co.uk/festival)

THE ROSEMARY FOUNDATION
Christmas Market
SUNDAY 16TH NOVEMBER
10.30 AM - 2.00 PM
Churcher's College
Ramshill, Petersfield GU31 4AS

A wide variety of stalls including...
Fashion • Children's • Homeware • Crafts • Gifts and more!

Father Christmas • Music • Refreshments
Tombola • Raffle • Lucky Dip

Even Bigger & Better Than Last Year!

DATES FOR YOUR DIARY

6th MAY	LIPHOOK GOLF CLUB PLANT & CAKES SALE Annual plants, baked goods, jam and chutneys
11th MAY	WARNFORD PARK AFTERNOON TEA Hosted by West Meon Women's Institute
16th to 18th May	HAWKLEY INN BEER FESTIVAL A Festival with great food, fantastic music and great beer
25th to 26th MAY	HIDDEN GARDENS OF GRAYSHOTT The gardens of Grayshott are opened to the public
21st JUNE	NURSES TEA PARTY Our annual Nurses Tea Party held at Liss Pavilion
5th JULY	HEADLEY GARDEN PARTY Private lunchtime garden party with food, drinks and music
15th to 19th JULY	HALF MOON MUSIC FESTIVAL Popular music festival organised by Entertainment Events
3rd AUGUST	HARTING MULTI-TERRAIN RACE 10 miles race with proceeds coming to us
26th to 30th AUGUST	FRINGE FESTIVAL, CHURCHER'S COLLEGE Eclectic mix of entertainment by talented artists
30th AUGUST	POP-UP PLOUGHMAN'S LUNCH Annual lunch held at Liss Pavilion - no booking required
26th SEPTEMBER	SOS THE ABBA PARTY BAND Festival Hall, Supported by boyband 'Legends'
16th NOVEMBER	THE ROSEMARY FOUNDATION CHRISTMAS MARKET Taking place at Churcher's College with many wonderful stalls, entertainment, refreshments and of course Father Christmas!

Look out for more information on our website

www.rosemary-foundation.org.uk



The Rosemary Foundation. 35 Lavant Street, Petersfield, Hants, GU32 3EL
Telephone: 01730 266329 Office email: info@rfpetersfield.org
Registered Charity No 1064723. Company Registered No: 3390218

